

LED T8 LAMP READY HIGHBAY

BLHT SERIES



PRODUCT DESCRIPTION:

The MaxLite T8 LED Lamp Ready linear Highbay provides distributors, contractors, and buyers with a UL listed fixtures designed specifically for LED T8 lamps. These Linear Highbay are constructed of the same durable materials as our Commercial Industrial grade fluorescent and LED PCB versions. These fixtures support competitive light output when used with MaxLite brand T8 LED single ended lamps. These fixtures are verified for use in Highbay, Lowbay, assembly, warehouse, and other general lighting applications

Caution: This product is specifically engineered and listed for use with MaxLite Single Ended conductor LED lamps. Maximum lamp wattages cannot exceed stated levels without voiding warranty. Use with any other branded lamps should be confirmed by a qualified electrician prior to use.

FEATURES:

- **Lamps not included**
- Designed for LED Single Ended lamps – Lamps supplied separately
- Maximum Photometric Efficiency with directional lamps
- V-Hooks std. with fixture, Cable kit mounting accessory available.
- Hinged Access Door for Emergency back up ballast** access (see options)
- 10-Year Warranty
- Knockouts on each end for motion sensor mounting

CONSTRUCTION:

- 22 Gauge Galvanized Steel, white post painted baked on enamel.
- High Polish Reflector – 86% enhanced
- Damp rated housings
- Supplied with ONLY Non-Shunted sockets and Single ended wiring configurations. For questions contact MaxLite
- Fits current MaxLite Linear HB door, wire guard, and lens accessories

CONTROL:

- Optional Occupancy sensor available* (on/off)

HIGHLIGHTS
100% Digital PIR (Passive Infrared) Detection – on/off function
Can adjust sensitivity of PIR Detector (30% to 100%)
Excellent Radio Frequency Immunity
Up to 30 ft mounting height
15-20 ft (4.57-6.10 m), 360° Radial Coverage Pattern, Covers up to 450 sq.ft
Self-Contained Relay
No Power Pack Needed
Interchangeable Hot & Load Wires
Impossible to Wire Backwards
Adjustable Time Delay from 15 seconds to 30 minutes
No Field Calibration or Sensitivity Adjustments Required
No required Ground

ORDERING INFORMATION

ORDER NUMBER	MODEL	DESCRIPTION	DIMENSIONS (L" x W" x H")
75428	BLHT4XT8USE4810	4 Lamp Linear Highbay Lamp Ready	48 x 10 x 3
75429	BLHT6XT8USE4815	6 Lamp Linear Highbay Lamp Ready	48 x 15 x 3
75430	BLHT8XT8USE4820	8 Lamp Linear Highbay Lamp Ready	48 x 20 x 3

NOTES:

1. * For ordering Occupancy sensor, add "MSO" suffix to model number

T8 & T5 HIGHBAY ACCESSORIES:

ORDER CODE	ITEM NUMBER	DESCRIPTION
71827	MLFHBL4DF	4 lamp T8 door frame and lens
71826	MLFHBL6DF	6 lamp T8 door frame and lens
72053	MLFHBL4DFWG	4 lamp T8 door frame and wire guard
72054	MLFHBL6DFWG	6 lamp T8 door frame and wire guard
72049	MLFHBL4DFWGL	4 lamp T8 door frame, wire guard and lens
72050	MLFHBL6DFWGL	6 lamp T8 door frame, wire guard and lens
70224	SKFHBLC120	120V 10' cord with plug
70225	SKFHBLC277	277V 10' cord with plug
71415	STD480-277-4	4 lamp T8 & T5 step down transformer (347-200V & 480-277V)
71414	STD480-277-6	6 lamp T8 & T5 step down transformer (347-200V & 480-277V)
71119	MLCHKSQ	Linear highbay cable hanging kit
73978	G13LPNS	G13 Low Profile Non-Shunted Lamp Holder



Door frame, wire guard and lens



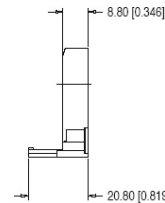
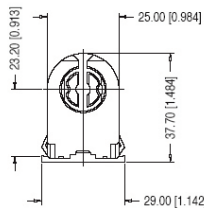
Door frame and wire guard



Door frame and lens



G13LPNS



IMPORTANT WARNING:

