



KT-LED63HID-H-EX39-830-D

HID REPLACEMENT LED LAMP

DESCRIPTION

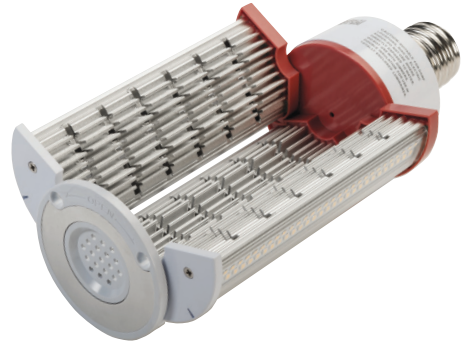
63W HID Replacement LED Lamp | 3000K | 80 CRI | IP64 Rated



US LISTED

RoHS Compliant

5 YEAR WARRANTY



LAMP TYPE: HID Replacement LED

BASE TYPE: EX39 (Mogul) Rotatable

WATTAGE: 63W

COLOR TEMPERATURE: 3000K

METAL HALIDE EQUIVALENT: 250W

COLOR RENDERING INDEX (CRI): 80

WARRANTY: 5 Years

PRODUCT FEATURES

- Replacement for Conventional Metal Halide Lamp
- Ideal for Wallpack Retrofit Applications
- Optimized for Horizontal Applications with Directional Light Output from Opening LED Assembly Construction
- Non-Dimmable; Do Not Dim
- 50,000+ Hour Lifetime
- Environmentally Friendly: No Mercury Used
- Instant Startup
- UL Listed
- Operating Temperature: -40°C/-40°F to 45°C/113°F in Enclosed Fixture
- Integral Driver, Eliminates the Need for External Driver or Ballast; Includes 4kV Surge Protection
- IP64 Rated; Integrated Heat Sink Quickly Dissipates Heat and Guides Water Intrusion Out of the Lamp
- Horizontal Orientation
- Suitable for Use in Fully Enclosed Fixture

OPERATING SPECIFICATIONS

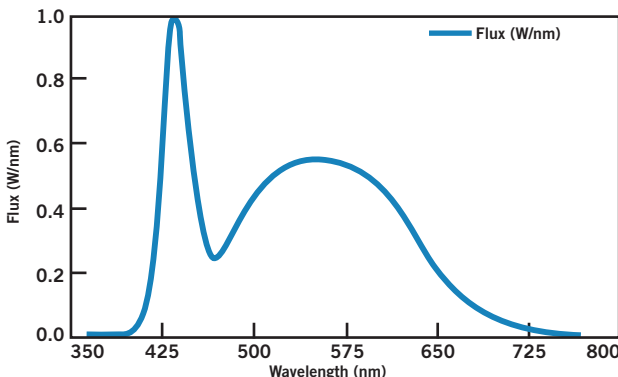
ELECTRICAL CHARACTERISTICS

Input Voltage	Power Consumption	Power Factor	Input Current
120-277Vac	63W	>0.9	0.53@120V 0.23@277V

PHOTOMETRIC CHARACTERISTICS

Color Temperature (CCT)	3000K	Efficacy	140 lm/W
Luminous Flux	8820 lm	Beam Angle	180°
Color Rendering Index (CRI)	80		

SPECTRAL DISTRIBUTION



RATED LIFE

L70 (Hours)

50,000

LUX DISTANCE CURVE

Flux out: 3647lm

Height	Eavg, Emax	Angle: 105.04deg	Diameter
1m	612.8, 1868lx		265.61cm
2m	153.2, 467.1lx		531.23cm
3m	68.09, 207.6lx		796.84cm
4m	38.30, 116.8lx		1082.46cm
5m	24.51, 74.74lx		1328.07cm
6m	17.02, 51.90lx		1593.68cm
7m	12.51, 38.13lx		1859.30cm
8m	9.575, 29.19lx		2124.91cm
9m	7.565, 23.07lx		2390.53cm
10m	6.128, 18.68lx		2556.14cm



KT-LED63HID-H-EX39-830-D

HID REPLACEMENT LED LAMP

WIRING INSTRUCTIONS

STEP 1

Disconnect power. Disconnect and remove existing ballast, capacitor, and/or ignitor (where applicable) from fixture.

STEP 2

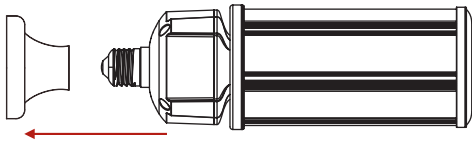
Rewire for line voltage to the lamp socket.

STEP 3

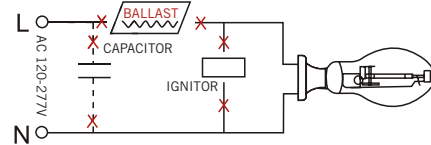
Install new LED replacement lamp. Ensure lamp is operating properly when power is turned on.

STEP 4

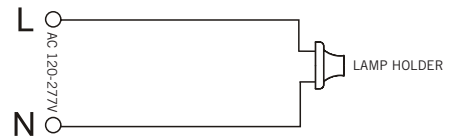
Rotate lamp base and open wings accordingly toward direction of desired lumination.



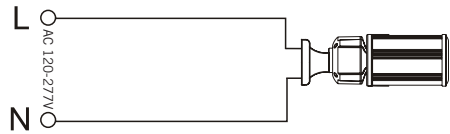
STEP 1



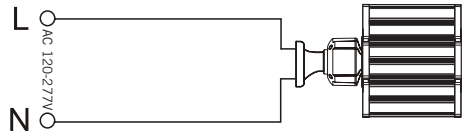
STEP 2



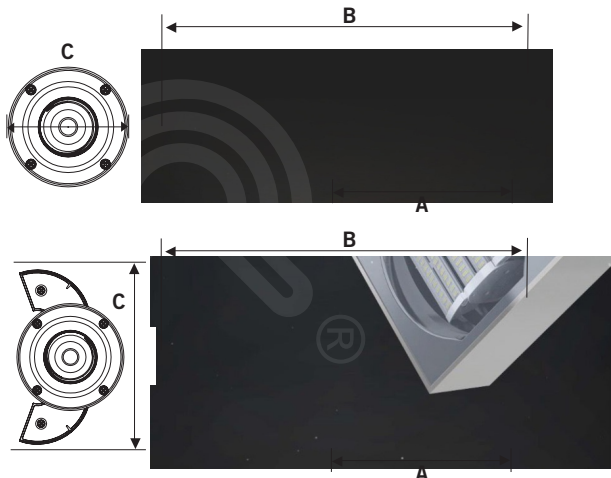
STEP 3



STEP 4



PHYSICAL CHARACTERISTICS



LAMP DIMENSIONS

WINGS CLOSED

A (Illuminated Length)	5.83"
B (Body Length)	10.23"
C (Width)	3.23"

WINGS OPEN

A (Illuminated Length)	5.83"
B (Body Length)	10.23"
C (Width)	5.26"

BASE TYPE: EX39 (Mogul) Rotatable



KT-LED63HID-H-EX39-830-D

HID REPLACEMENT LED LAMP

ORDERING INFORMATION

ORDER CODE	PACKAGING STYLE	PACK QTY.	ITEM STATUS
KT-LED63HID-H-EX39-830-D-DP	Distributor Pack (Individual Cartons)	16	Quick Ship

CATALOG NUMBER BREAKDOWN

KT-LED63HID-H-EX39-830-D-DP									
Keystone Technologies	LED Lamp	Wattage	Lamp Type	Horizontal Orientation	Base Type	800 Series	Color Temp.	Direct Drive Series	Packaging Style